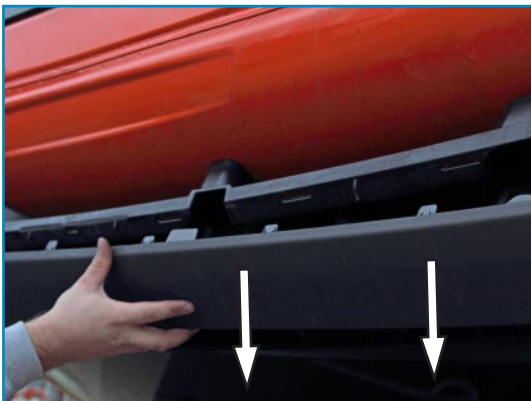
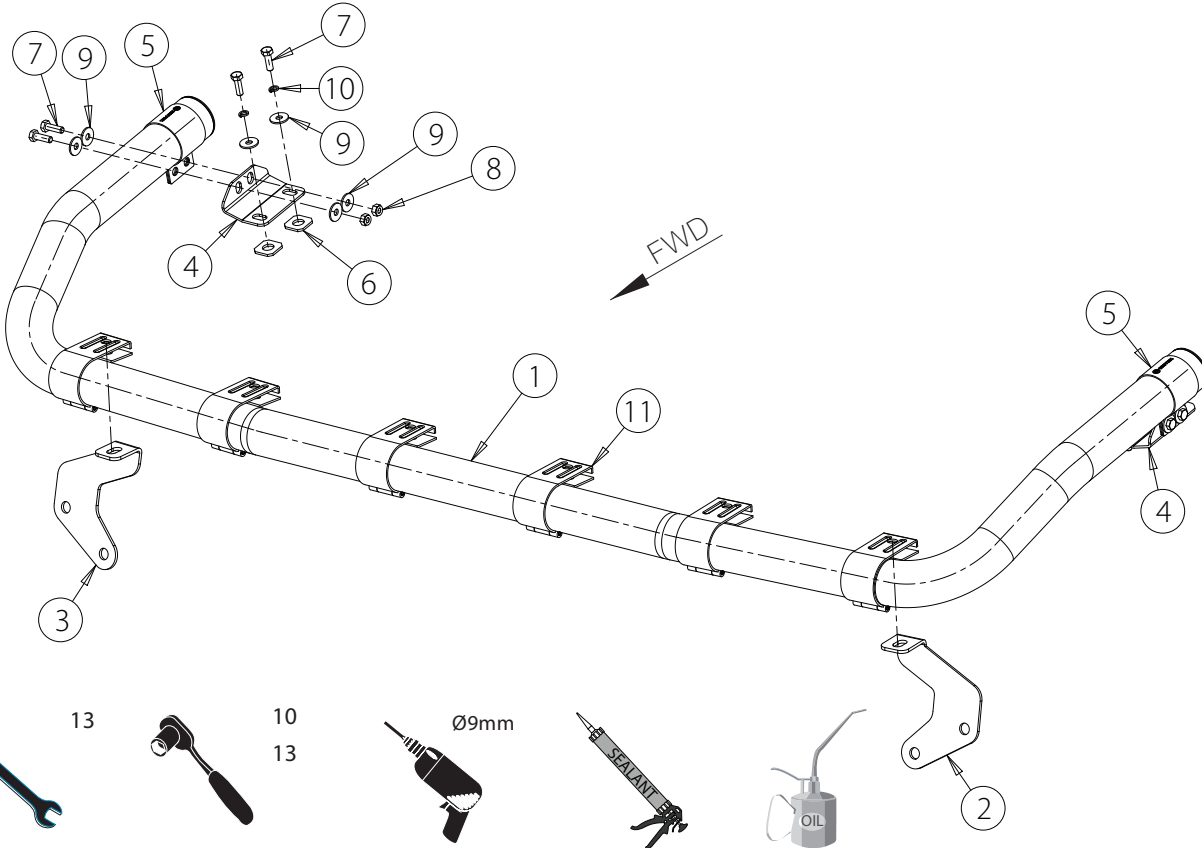


BATV620 - BATV621 Volvo FH 2013- (Low roof)



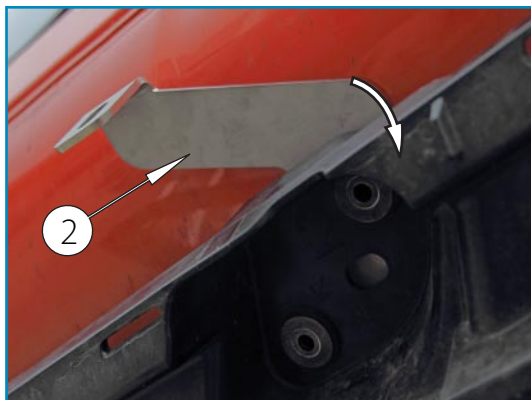
- | | |
|--|----|
| 1. Laternakandur / lampholder / носитель фар | 1 |
| 2. Kronstein / bracket / кронштейн | 1 |
| 3. Vinkel / angeled plate / угольник | 1 |
| 4. Vinkel / angeled plate / угольник | 2 |
| 5. Klamber / clamp / клип | 2 |
| 6. Kompensaator / rubber plate / компенсатор | 4 |
| 7. Pult / bolt / болт M8x25 mm | 8 |
| 8. Mutter / nut / гайка M8 DIN 985 | 4 |
| 9. Seib / washer / шайба 8,4x24x2 mm | 12 |
| 10. Vedruseib / spring washer / пружинная шайба A8 | 4 |
| 11. laternaklammer / lamp clamp / зажим для фар | 6 |



Pilt 1 / Pic. 1 / Рис. 1



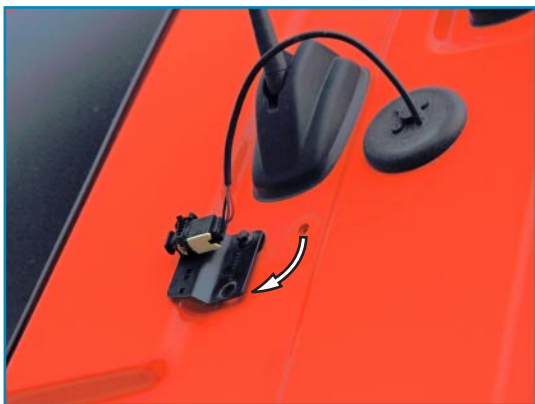
Pilt 2 / Pic. 2 / Рис. 2



Pilt 3 / Pic. 3 / Рис. 3

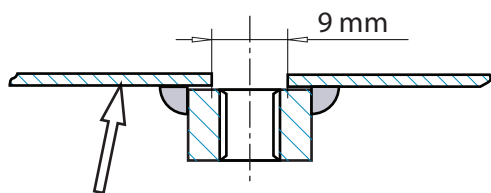


Pilt 4 / Pic. 4 / Рис. 4



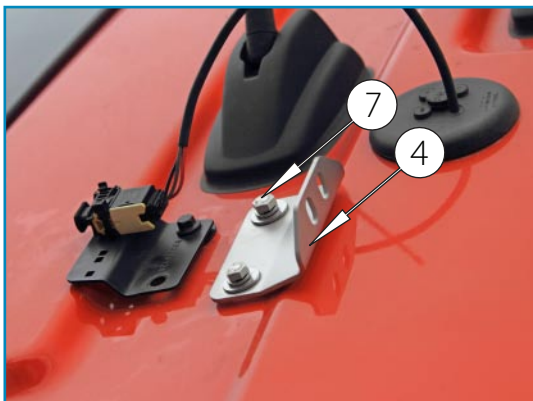
Pilt 5 / Pic. 5 / Рис. 5

Caution, risk of damage to thread!



Car Body

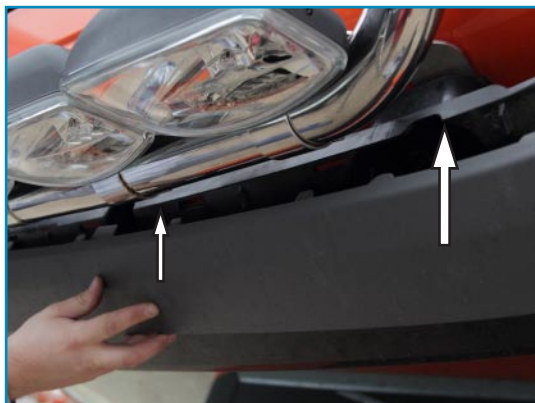
Pilt 7 / Pic. 7 / Рис. 7



Pilt 9 / Pic. 9 / Рис. 9



Pilt 11 / Pic. 11 / Рис. 11

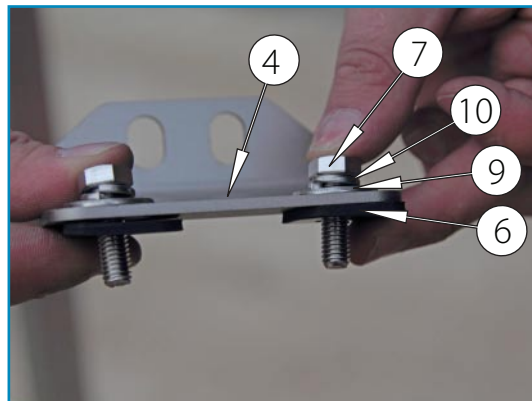


Pilt 13 / Pic. 13 / Рис. 13

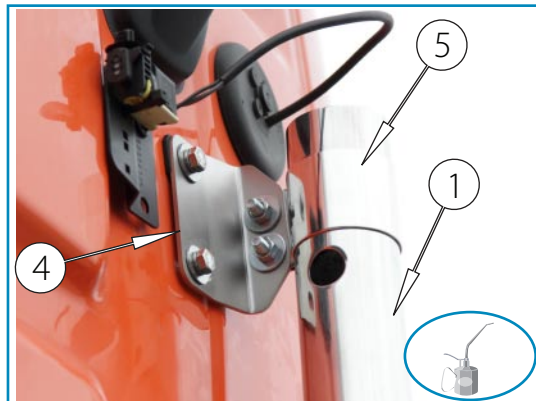


ORIGINAL HOLE MARKERS!

Pilt 6 / Pic. 6 / Рис. 6



Pilt 8 / Pic. 8 / Рис. 8



Pilt 10 / Pic. 10 / Рис. 10



Pilt 12 / Pic. 12 / Рис. 12

- Measures : 100x550x1670 mm.
- Weight : 11,3 kg.
- Time of mounting : 45 min.